

STATE OF MINNESOTA, } ss.  
COUNTY OF MURRAY, }

I hereby certify that the within Instrument  
was filed in this office for record on the  
30<sup>TH</sup> day of AUGUST A.D. 20 19  
at 9:00 o'clock A. M, and was duly  
recorded as Document No. \_\_\_\_\_

Evelyn C. Larson   
County Recorder

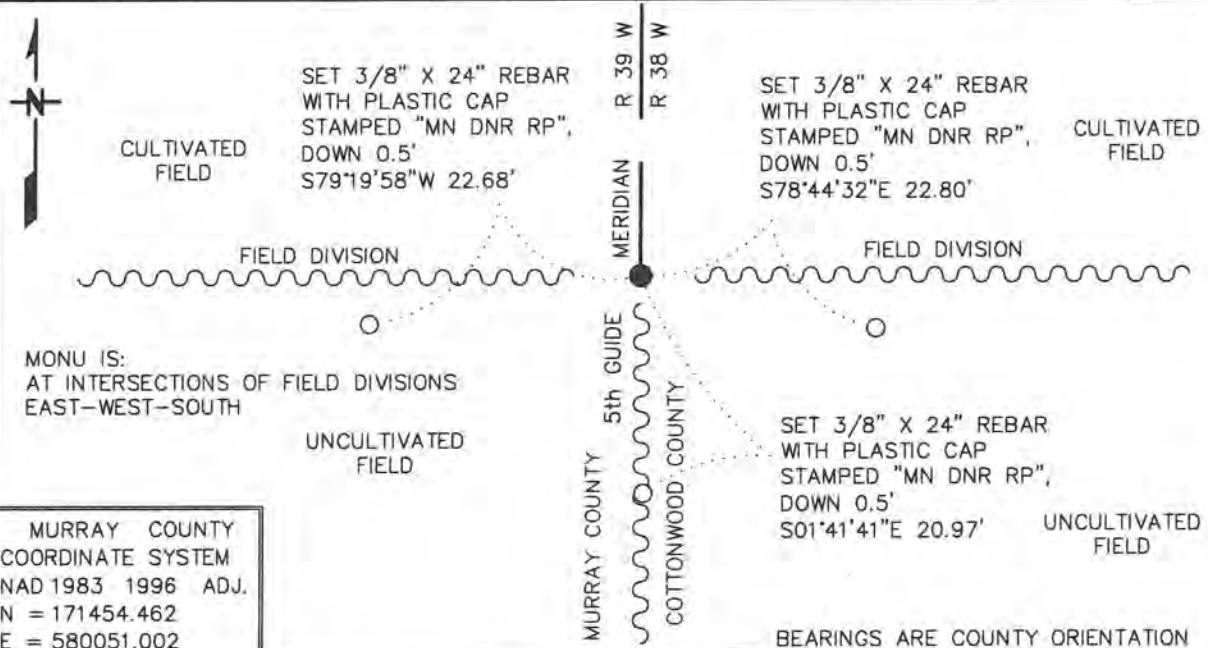
Index No. \_\_\_\_\_ T-25

# CERTIFICATE OF LOCATION OF GOVERNMENT CORNER

EAST QUARTER Corner of Section 25 , Township 107 N , Range 39 W  
5TH Principal Meridian, State of Minnesota, County of MURRAY

At the corner location shown on the sketch:

- On 10/19/2017 found a PERFORATED STEEL TUBE WITH AN ALUMINUM CAP  
DATE  
STAMPED "DNR SURVEY MARKER", DOWN 1.0'  
 left monument as found,  lowered monument,  removed monument (explain)
- On \_\_\_\_\_ Placed a \_\_\_\_\_  
DATE



Statement of evidence for this corner location is on back of this page.

APRIL 2018  
WMA00745

I hereby certify that this plan, specification, or report was prepared by me or under my direct supervision and that I am a duly Licensed Land Surveyor under the laws of the State of Minnesota.

SIGNATURE

Bruce W. Sheppard  
BRUCE W. SHEPPARD

DATE

8/15/19

License Number

17003

East Quarter Corner of Section 25, Township 107 North, Range 39 West

1985 November, Lowell R. Pommerening Jr., PLS 17005, with the Minnesota Department of Natural Resources filed a Certificate of Location of Government Corner for this corner in the Murray County Recorder's Office.

A Certificate of Location of Government Corner for this corner was recorded on November 14, 1985 in the Cottonwood County Recorder's Office as Document No. 188922, File 172 Card 2184, Microfilmed.

**FOR ADDITIONAL INFORMATION SEE THE ABOVE CERTIFICATES OF  
LOCATION OF GOVERNMENT CORNER**

The DNR Division of Lands and Minerals contacted the following for survey information:

Website - [mnggeo.state.mn.us](http://mnggeo.state.mn.us) for GLO plat and field notes

Website - [murray-countymn.com](http://murray-countymn.com) for section and quarter section corner information

Murray County Recorder's Office

Cottonwood County Recorder's Office

Zieske Land Surveying, Inc. of Windom

2017 October 19, the DNR Division of Lands and Minerals visited the area of the corner and found an aluminum cap stamped "D.N.R. SURVEY MARKER" on a perforated steel tube, leaning to the northeast. So made the monument plumb and set it down a foot and found it to be:

a) at the intersection of field divisions east-west-south

b) 2634.65 feet from the northeast corner of Section 36/southwest corner of Section 30

c) 5269.87 feet from the east quarter corner of Section 24

d) 0.01 of a foot west of a straight line from the northeast corner of Section 36 to the east quarter corner of Section 24

Analysis of the above information led the DNR Division of Lands and Minerals to conclude that the found aluminum cap stamped "D.N.R. SURVEY MARKER" on a perforated steel tube, marks the location of the corner.